

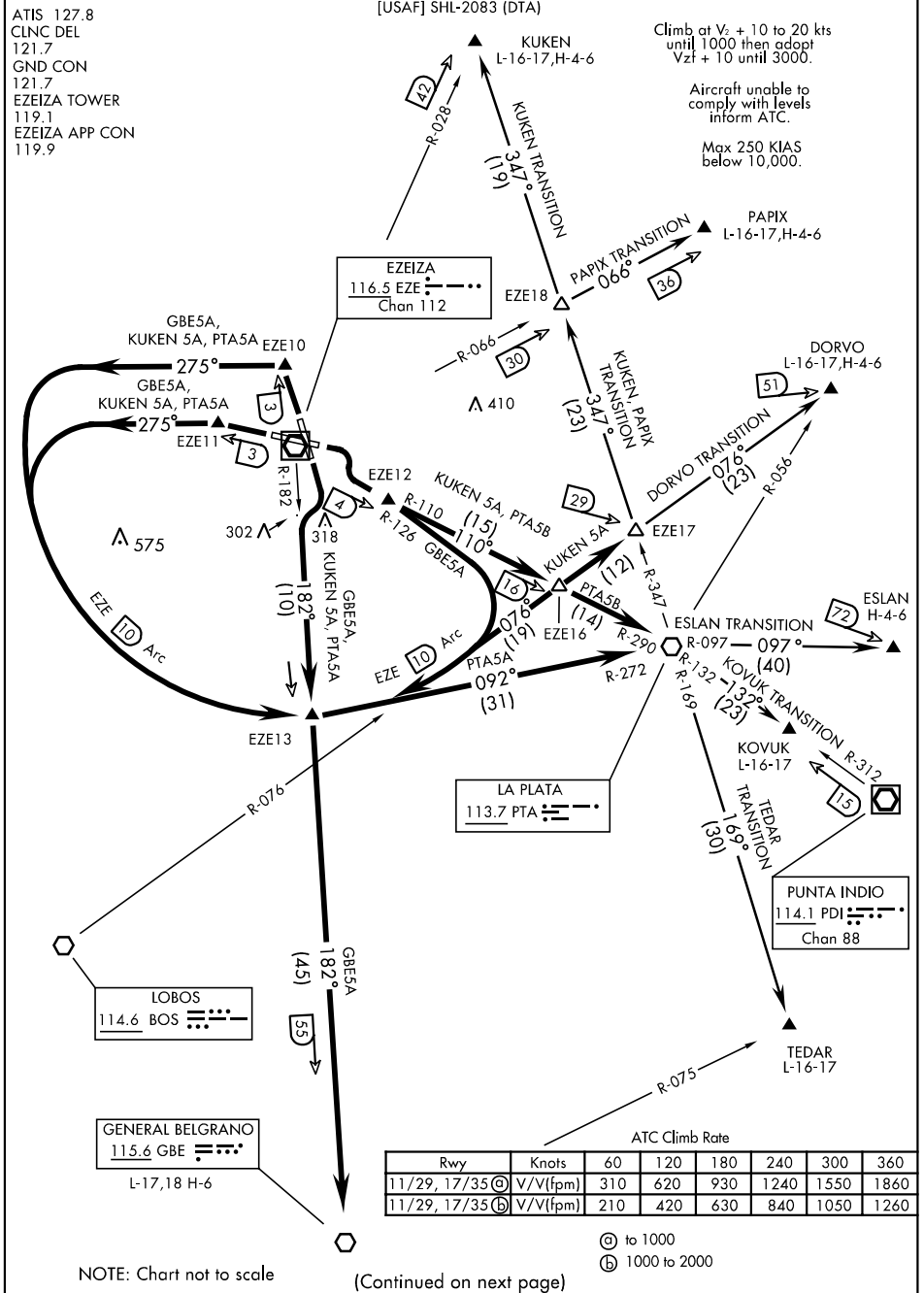
ATIS 127.8  
CLNC DEL  
121.7  
GND CON  
121.7  
EZEIZA TOWER  
119.1  
EZEIZA APP CON  
119.9

[USAF] SHL-2083 (DTA)

Climb at  $V_2 + 10$  to 20 kts  
until 1000 then adopt  
 $V_{zt} + 10$  until 3000.

Aircraft unable to  
comply with levels  
inform ATC.

Max 250 KIAS  
below 10,000.



ATC Climb Rate							
Rwy	Knots	60	120	180	240	300	360
11/29, 17/35 (A)	V/V(fpm)	310	620	930	1240	1550	1860
11/29, 17/35 (B)	V/V(fpm)	210	420	630	840	1050	1260

(A) to 1000  
(B) 1000 to 2000

NOTE: Chart not to scale

(Continued on next page)